

Zoning Map

of the Town of Barnstable Massachusetts

INDEX MAP

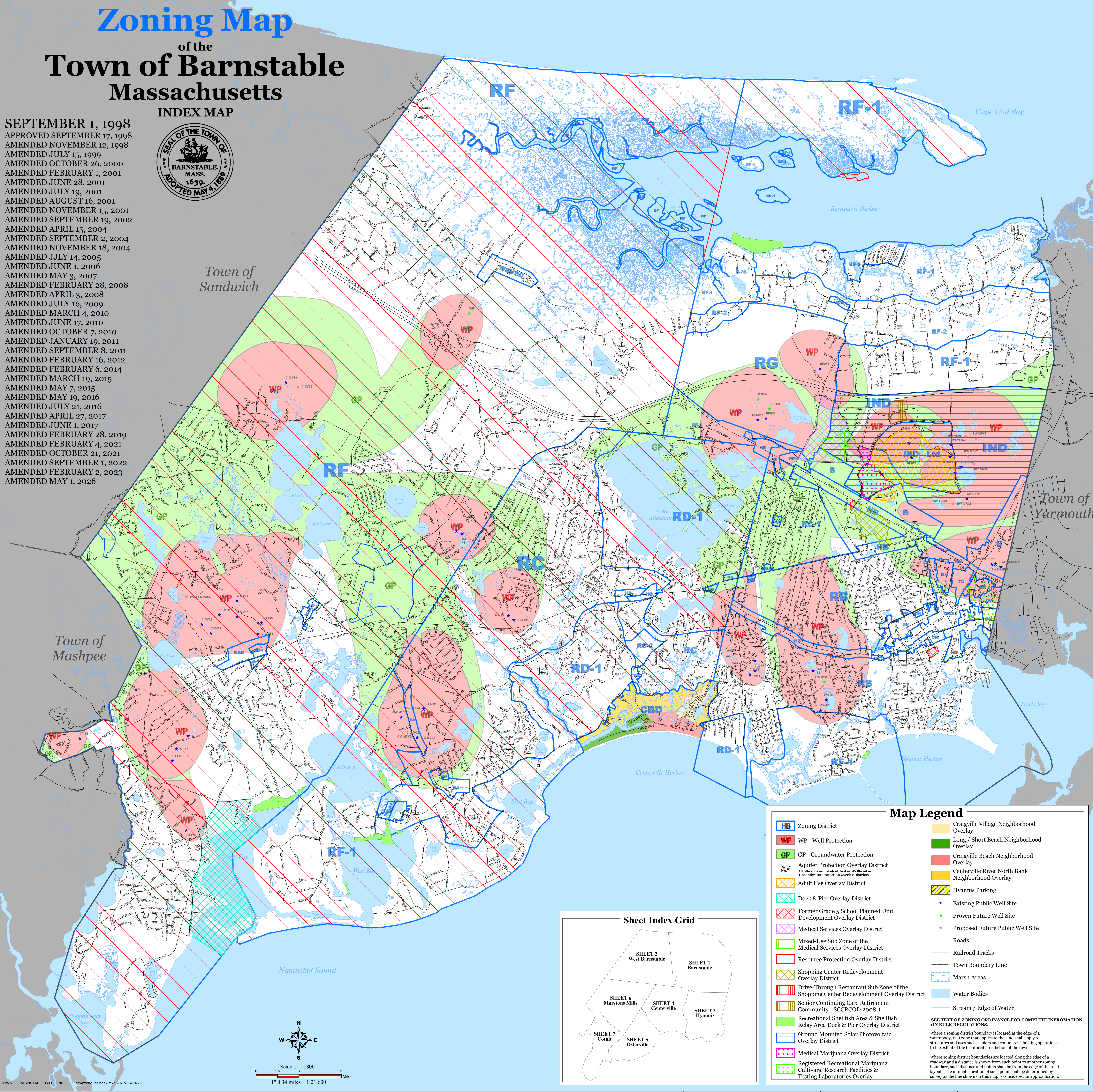
SEPTEMBER 1, 1998
 APPROVED SEPTEMBER 17, 1998
 AMENDED NOVEMBER 12, 1998
 AMENDED JULY 15, 1999
 AMENDED OCTOBER 26, 2000
 AMENDED FEBRUARY 1, 2001
 AMENDED JUNE 28, 2001
 AMENDED JULY 19, 2001
 AMENDED AUGUST 16, 2001
 AMENDED NOVEMBER 15, 2001
 AMENDED SEPTEMBER 19, 2002
 AMENDED APRIL 15, 2004
 AMENDED SEPTEMBER 2, 2004
 AMENDED NOVEMBER 18, 2004
 AMENDED JULY 14, 2005
 AMENDED JUNE 1, 2006
 AMENDED MAY 3, 2007
 AMENDED FEBRUARY 28, 2008
 AMENDED APRIL 3, 2008
 AMENDED JULY 16, 2009
 AMENDED MARCH 4, 2010
 AMENDED JUNE 17, 2010
 AMENDED OCTOBER 7, 2010
 AMENDED JANUARY 19, 2011
 AMENDED SEPTEMBER 8, 2011
 AMENDED FEBRUARY 16, 2012
 AMENDED FEBRUARY 6, 2014
 AMENDED MARCH 19, 2015
 AMENDED MAY 7, 2015
 AMENDED MAY 19, 2016
 AMENDED JULY 21, 2016
 AMENDED APRIL 27, 2017
 AMENDED JUNE 1, 2017
 AMENDED FEBRUARY 28, 2019
 AMENDED FEBRUARY 4, 2021
 AMENDED OCTOBER 21, 2021
 AMENDED SEPTEMBER 1, 2022
 AMENDED FEBRUARY 2, 2023
 AMENDED MAY 1, 2026



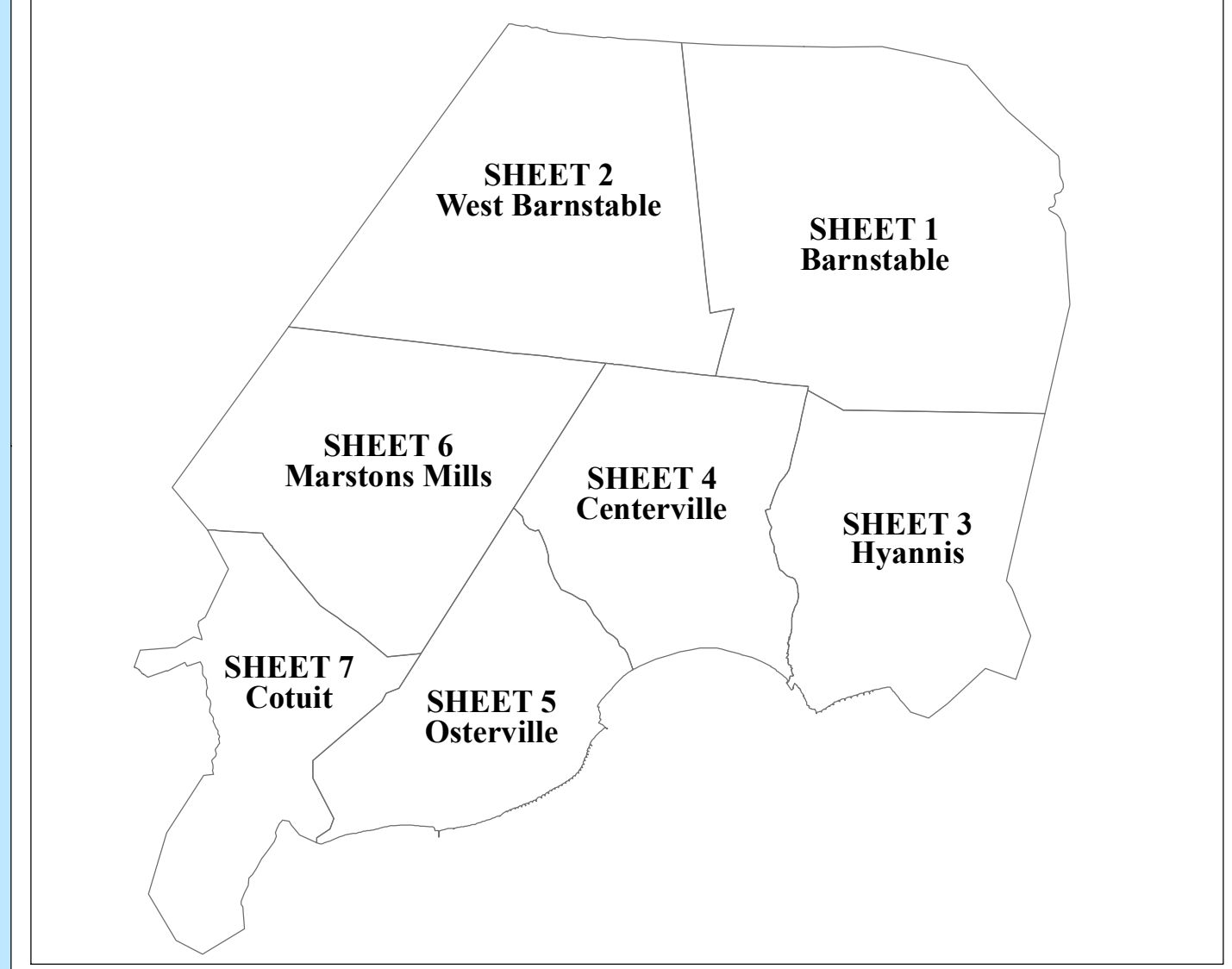
Town of
Sandwich

Town of
Mashpee

Town of
Yarmouth

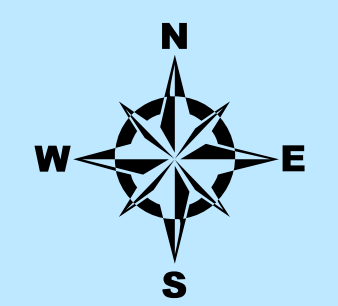


Sheet Index Grid



Map Legend

- | | |
|---|---|
| Zoning District | Craigville Village Neighborhood Overlay |
| WP - Well Protection | Long / Short Beach Neighborhood Overlay |
| GP - Groundwater Protection | Craigville Beach Neighborhood Overlay |
| AP - Aquifer Protection Overlay District
<small>All other areas not identified as Wellhead or Groundwater Protection Overlay Districts</small> | Centerville River North Bank Neighborhood Overlay |
| Adult Use Overlay District | Hyannis Parking |
| Dock & Pier Overlay District | Existing Public Well Site |
| Former Grade 5 School Planned Unit Development Overlay District | Proven Future Well Site |
| Medical Services Overlay District | Proposed Future Public Well Site |
| Mixed-Use Sub Zone of the Medical Services Overlay District | Roads |
| Resource Protection Overlay District | Railroad Tracks |
| Shopping Center Redevelopment Overlay District | Town Boundary Line |
| Drive-Through Restaurant Sub Zone of the Shopping Center Redevelopment Overlay District | Marsh Areas |
| Senior Continuing Care Retirement Community - SCCRCOD 2008-1 | Water Bodies |
| Recreational Shellfish Area & Shellfish Relay Area Dock & Pier Overlay District | Stream / Edge of Water |
| Ground Mounted Solar Photovoltaic Overlay District | |
| Medical Marijuana Overlay District | |
| Registered Recreational Marijuana Cultivars, Research Facilities & Testing Laboratories Overlay | |
- SEE TEXT OF ZONING ORDINANCE FOR COMPLETE INFORMATION ON BULK REGULATIONS.**
- Where a zoning district boundary is located at the edge of a water body, that zone that applies to the land shall apply to structures and uses such as piers and commercial boating operations to the extent of the territorial jurisdiction of the town.
- Where zoning district boundaries are located along the edge of a roadway and a distance is shown from such point to another zoning boundary, such distance and points shall be from the edge of the road layout. The ultimate location of each point shall be determined by survey as the line shown on this map is considered an approximation.



Scale 1" = 1800'
 0 1.5 3 6
 1" = 0.34 miles 1:21,600